

spex

Shaping Better Lives



Growth-Adjust
Back Support



The Back Support
that stretches for
future growth!





The Growth-Adjust Back Support has **inbuilt height adjustment** due to its unique shell style. Future-proof for user's growth or a preferred change in Back Support height with the precise sliding adjustment function to accommodate **up to 5" / 12.5cm of growth**.

The innovative growth adjustment system has an **upper sliding interface**, meaning that from the initial wheelchair setup the prescriber can be confident that the back support can adjust in height as the user grows. This is particularly effective for paediatrics.

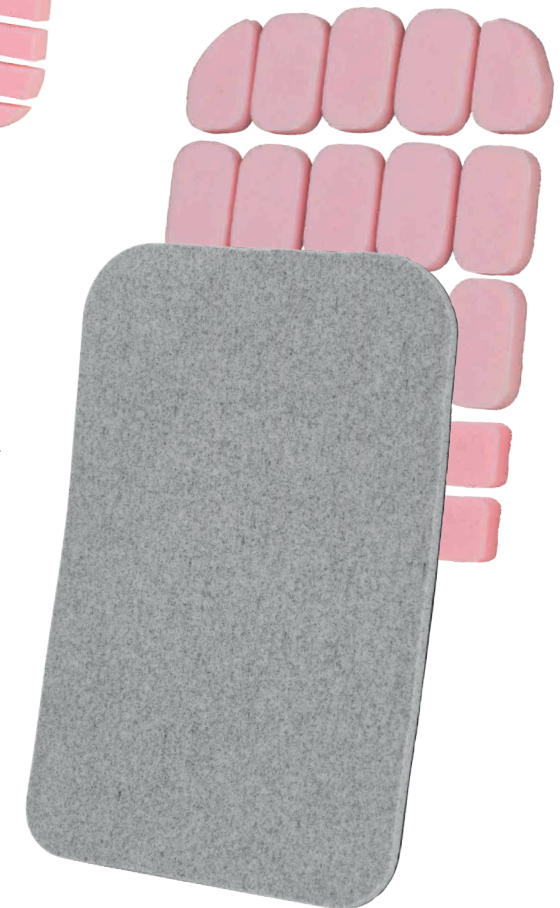
The foam and upholstery unit is matched for the longest growth setting of the Back Support, so there is no requirement to purchase different sizes of padding as the user grows.

The growth-adjustable shell is available with the following padding options:



Growth-Adjust:

For users with symmetrical postures.



**Growth-Adjust
Spex Classic:**

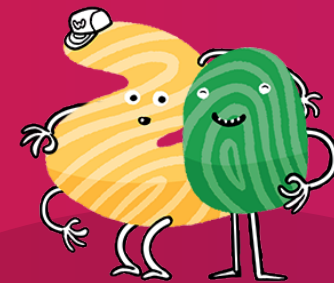
Contourable cube padding for users with asymmetries and require pressure reduction.

Paediatric Specific Design

The 12" and 14" sizes of Growth-Adjust Back have been engineered specifically with paediatrics in mind.



Inbuilt Harness Guides in the Back Support shell ensure the Anterior Trunk Support is precisely positioned over the shoulders.



Wonderseat

Wonderseat Compatible: Use any of the Wonderseat paediatric seating components with the 12" and 14" shells.

T Shape Option

Removable plate that you can take off if you want the foam to sit between the canes and the 'T' to rest on them.



Rigid T Shape insert fits inside the outer cover and be easily added or removed to provide varying levels of support throughout the day.

The back support can also be set up without the insert to allow the back support to be positioned in between the wheelchair canes.



Foam pads can be removed easily to allow more movement and re-added to provide more support.

Remove the foam pads in the morning when energy and activity is high and add them back in the evening when energy is low and support is required.

Functional Benefits

Start Small: Padding tucks under Back Support

When the Back Support height is set at a lower height range, the spare padding tucks away behind the cushion.



Grow Tall: Padding extends with Back Support

When the Back Support height is extended, the foam padding follows the adjustments that are made.







Wonderseat

DUICKIE

Padding options to suit requirements

Choose from standard planar foam, or Spex Classic padding style if contouring is required.



On-the-spot precise growth adjustment

Shell adjusts in height on the spot without requiring any additional parts. **Height adjustment is performed with a continual sliding motion on all 3 adjustment bolts.**



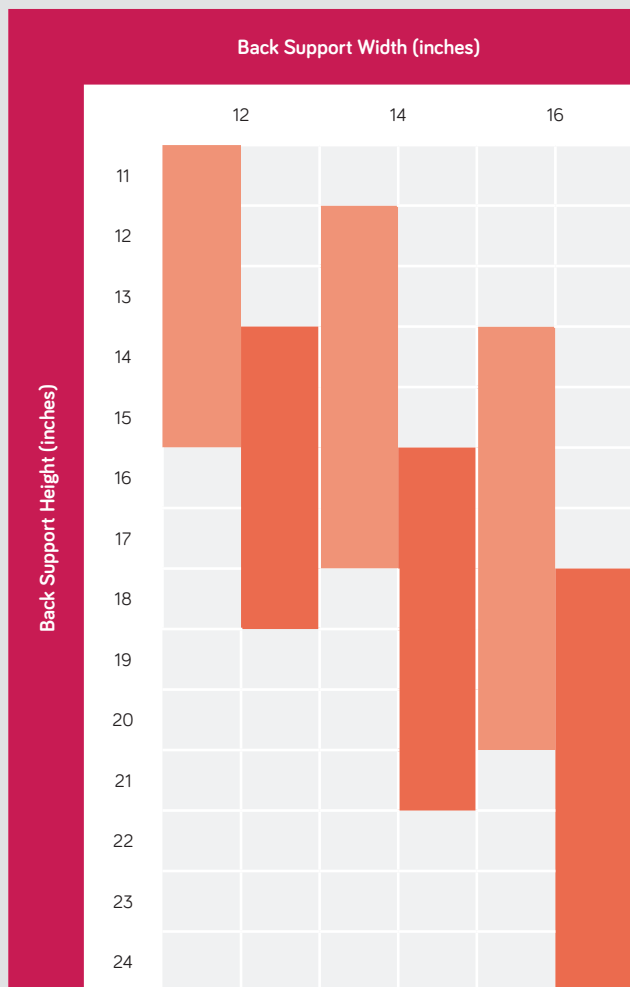
Back Support Specifications

Specifications

	GROWTH-ADJUST
WEIGHT CAPACITY	12" and 14" = 90kg 16" = 136kg
OVERALL THICKNESS (INCLUDING COVER)	5cm

BACK SUPPORT	WIDTH	MIN HEIGHT	MAX HEIGHT	ORDER CODE
GROWTH-ADJUST	12" (Size 0)	11"	15"	1252-1211-OGA
		14"	18"	1252-1214-OGA
	14" (Size 1)	12"	17"	1252-1412-OGA
		16"	21"	1252-1416-OGA
	16"	14"	20"	1252-1614-OGA
		18"	24"	1252-1618-OGA
GROWTH-ADJUST SPEX CLASSIC	12" (Size 0)	11"	15"	1255-1211-OGA
		14"	18"	1255-1214-OGA
	14" (Size 1)	12"	17"	1255-1412-OGA
		16"	21"	1255-1416-OGA
	16"	14"	20"	1255-1614-OGA
		18"	24"	1255-1618-OGA
GROWTH-ADJUST SPEX CLASSIC T SHAPE	12" (Size 0)	11"	15"	1255-1211-TGA
		14"	18"	1255-1214-TGA
	14" (Size 1)	12"	17"	1255-1412-TGA
		16"	21"	1255-1416-TGA
	16"	14"	20"	1255-1614-TGA
		18"	24"	1255-1618-TGA

Sizing Chart



- Red squares are standard sizes.
- Non-standard or custom sizes are available on request.
- Compatible with Wheelchair sizes up to; minus 2 inches.
e.g. a 12" back support fits a 10, 11, and 12 inch wheelchair.

Transport Certified All Growth-Adjust Back Supports and hardware configurations are suitable for transport in a vehicle when mounted on an appropriate wheelchair frame.



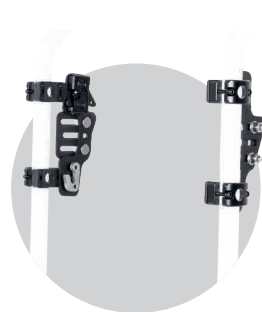
Configurable mounting hardware options

Three options of mounting hardware allow the back support to be pushed forward or backwards depending on individual needs:



Single Mount

Single Mount hardware is a lightweight option for lower height back supports and has two points of attachment to the back support canes of a wheelchair. Like Dual Mount, this hardware option also offers simpler set up, increased adjustability, angle, and growth.



Dual Mount

Dual Mount hardware has two points of attachment to the back support canes of a wheelchair and offers simpler set up, increased adjustability, angle, and growth. It utilises the same quick-release hook and latch operation to secure the back support.



Quad Mount

Quad Mount is the default and most commonly prescribed hardware for the Spex Back Support range. It uses four independent points of attachment to the back support canes of the wheelchair, for ultimate strength and lateral positioning.



Drop Mount

The lightweight Drop Mount hardware self-locks into place and is simple to operate with a single combined clamp and mechanism unit. The release mechanism is suitable for single-handed use, and those with limited hand function.

Please note this hardware option is not available in all regions.

HARDWARE	SINGLE MOUNT	DUAL MOUNT	QUAD MOUNT	DROP MOUNT
SEAT DEPTH ADJUSTMENT	45mm	40mm	40mm	Paediatric: 2" Medium: 2" Large: 3"
BACK SUPPORT ANGLE	30°	30°	10°	30°
WEIGHT	0.9kg	1.15kg	0.9kg	0.6-0.8kg
CODE	1259-2100-100	1259-2205-100	1259-2400-100	1259-1400-00X Paediatric: 00P Medium: 00M Large: 00L

Growth-Adjust Back Support Accessories



Spex Lateral Supports

Lateral trunk support pads for adjustability, comfort and positioning. Anatomical pad design on Narrow Curved and Broad pads incorporates new full curved Natural-Lateral surface which has been developed for optimum fitting to body shape.

Supporting surface of each lateral pad includes a layer of pressure relieving foam for additional protection and comfort.

Huge pad range available to provide the exact snug fitting comfort that is required. Select from the wide range of Spex Lateral Support options available.



Spex Shoulder Strap Guides

Recommended for any harness choice to prevent shoulder straps from falling off shoulders. The Spex Harness Guides are height adjustable and fit both 1" and 1.5" straps. Package includes a pair of 5mm aluminium strap guides and attachment hardware.

1400-6692-000

The 12" and 14" sizes come with cam locks (no shoulder strap guides required). These are compatible with Wonderseat harnesses.



Spex Head Supports

Spex Head Support pads are constructed from an internal aluminium shell covered by an injection moulded polyurethane foam to ensure smooth and comfortable support surface. The family of head support shapes have been geometrically and biomechanically designed to give greater support and stability for head positioning for wheelchair users. Along with the versatile Spex Stylo hardware, it's possible to accommodate an extensive range of head positioning requirements.

Select from the wide range of Spex Head Support options available.



Wonderseat Head supports are compatible with 12" and 14" back support sizes

spex

Manufactured by Spex Ltd

32 Detroit Drive
Rolleston 7675
New Zealand

+64 3 307 9790

solutions@spexseating.com

spexseating.com



DISTRIBUTED BY: